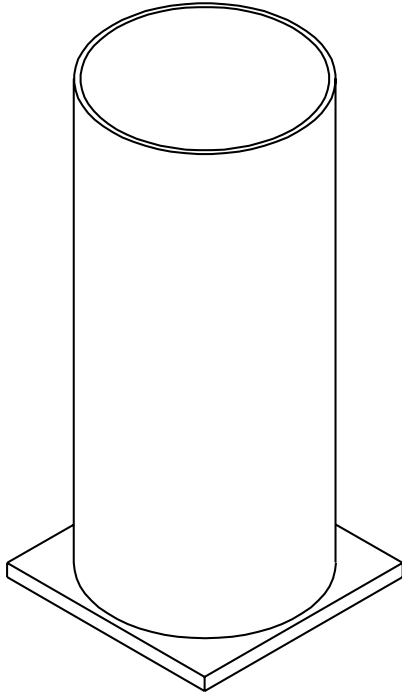


Floor Sleeves

by **DRAPER**



Specifications—501006

3½" I.D. Floor Sleeve (For use with Elite, Power, Combination, Steel Volleyball Systems and Power Tennis System)
 _____ Floor Sleeves, #501006 by Progressive Sports Construction Group.
 Floor sleeve shall be constructed of steel mechanical tubing with an inside diameter of 3½", welded to a 4" x 4" bottom plate. Sleeve shall be 8½" deep with overall length of 8¾".

Specifications—501008

2¾" I.D. Floor Sleeve (For use with Badminton Game System and Combination Game Standard)
 _____ Floor Sleeves, #501008 by Progressive Sports Construction Group.
 Floor sleeve shall be constructed of steel mechanical tubing with an inside diameter of 2¾", welded to a 3" x 3" bottom plate. Sleeve shall be 8½" deep with overall length of 8¾".

Specifications—501009

3" I.D. Floor Sleeve
 _____ Floor Sleeves, #501009 by Progressive Sports Construction Group.
 Floor sleeve shall be constructed of steel mechanical tubing with an inside diameter of 3", welded to a 4" x 4" bottom plate. Sleeve shall be 8½" deep with overall length of 8¾".

Specifications—501010

4" I.D. Floor Sleeve
 _____ Floor Sleeves, #501010 by Progressive Sports Construction Group.
 Floor sleeve shall be constructed of steel mechanical tubing with an inside diameter of 4", welded to a 6" x 6" bottom plate. Sleeve shall be 12½" deep with overall length of 12¾".

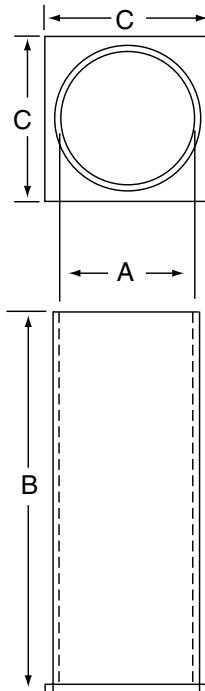
LEED® Submittal Information

Credit	Measure	
MRc4 – Recycled Content	Post Consumer Average 25%	Post Industrial 0%
MRc5 – Regional Materials	Product Manufactured in Spiceland, IN 47385	

Please Mark Appropriate Selections

- 501006—3½" I.D.
Quantity: _____
- 501008—2¾" I.D.
Quantity: _____
- 501009—3" I.D.
Quantity: _____
- 501010—4" I.D.
Quantity: _____

Model	A	B	C
501006	3½"	8¾"	4"
501008	2¾"	8¾"	3"
501009	3"	8¾"	4"
501010	4"	12¾"	6"



DRAPER

411 S. Pearl St., Spiceland, IN 47385 USA ■ 765-987-7999 ■ fax 866-637-5611
 e-mail drapercontract@draperinc.com ■ www.draperinc.com

Copyright © 2015 Draper Inc. Form VB_501006-8-9-10_Sub15 Printed in U.S.A.

PROJECT: _____

ARCHITECT: _____

CONTRACTOR: _____

SUPPLIER: _____

DATE: _____ REVISED: _____