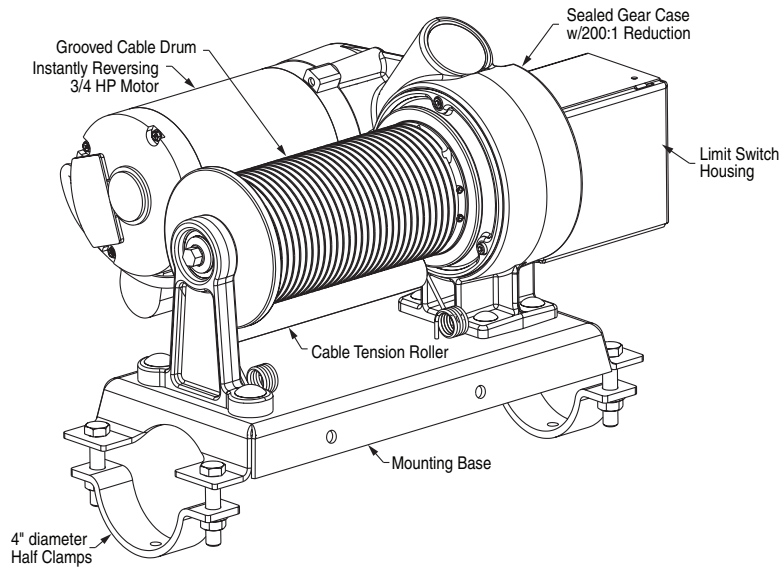
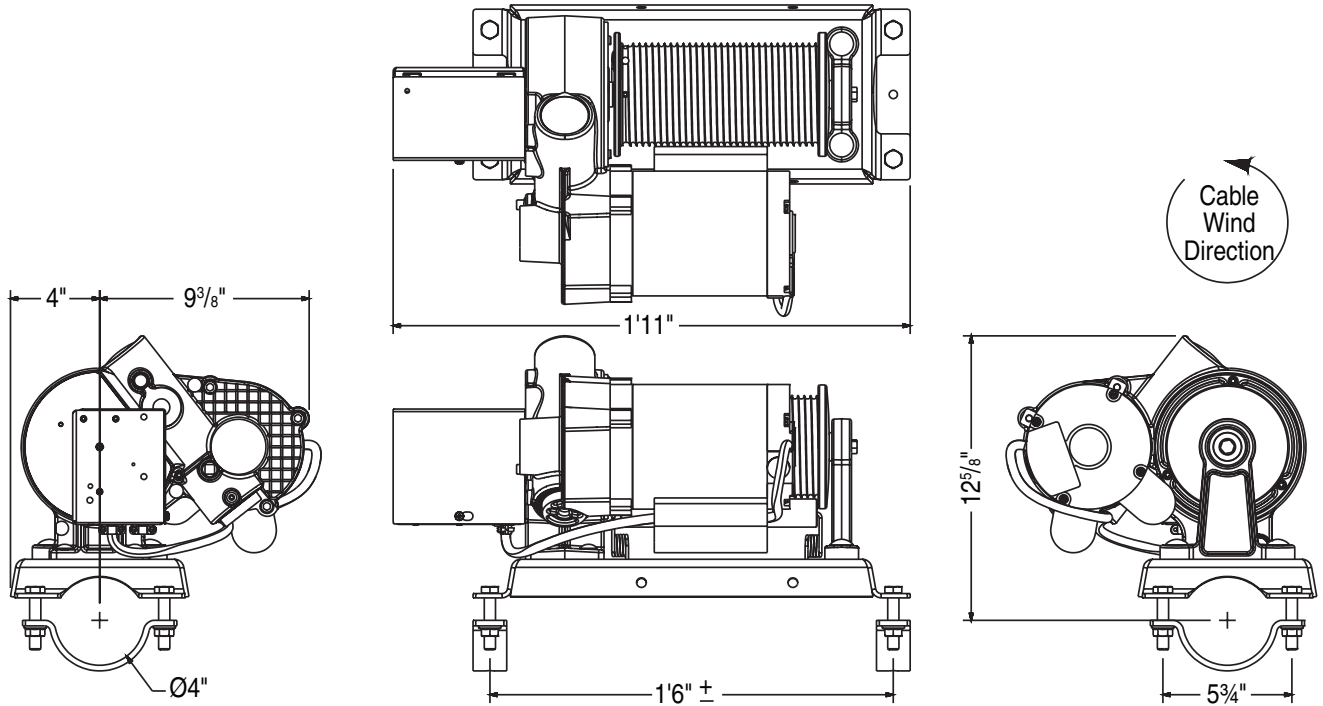


# Backstop Winch

Motorized Winch for use with  
EZ Fold Basketball Backstops

by **DRAPER**

## Winch Assembly Diagram/Mounting Options



**DRAPER**®

411 S. Pearl St., Spiceland, IN 47385 USA ■ 765-987-7999  
www.draperinc.com ■ fax 765-987-7142

Copyright © 2013 Draper Inc. Form EZ-BackstopWinch\_Sub13 Printed in U.S.A.

PROJECT: \_\_\_\_\_

ARCHITECT: \_\_\_\_\_

CONTRACTOR: \_\_\_\_\_

SUPPLIER: \_\_\_\_\_

DATE: \_\_\_\_\_ REVISED: \_\_\_\_\_

# Backstop Winch

Motorized Winch for use with  
EZ-Fold Basketball Backstops 

## Specifications—Backstop Winches

\_\_\_\_\_ winches, model 503285/503280 Basketball Backstop Electric Winch by Draper, Inc., Spiceland, Indiana. Winch delivers 1250 pounds (566 Kg) of vertical line pull and is UL listed as a complete assembly.

Winch features a powerful 3/4 HP, 115 volt, single phase, instant reverse motor with thermal overload protection that is governed to stall at 14 amps. Motor is rated at an intermittent 10 minute duty cycle. Winch motor operates at full load amperage rating of 11.5 full load amps. Winch has integral limit switches to stop travel in up and down positions.

Winch has an oil-bath gear case with precision ball bearings and premium seals for a lifetime of maintenance-free, leak free operation. Gear case features hardened steel gears that are securely captured to take on radial and thrust loads. Double worm gear reduction is in a ratio of 200:1 to provide exceptional holding power under load and eliminates the need for special or supplemental braking systems. Winch is specified to continuously run at the maximum rated load of 1250 lbs/ 566 kilograms for the motors rated duty cycle of 10 minutes without sustaining any gear damage.

Winch has a large 4 1/2" diameter cable drum that is helically grooved to accept 1/4" - 7 x 19 galvanized aircraft cable. Drum will accept up to 35' (10.7 meters) on a single layer and has a torsion spring tensioning roller to insure cable tracks properly into grooves, even if cable is allowed to go slack. Large diameter, grooves and tensioning spring provide long cable life and performance.

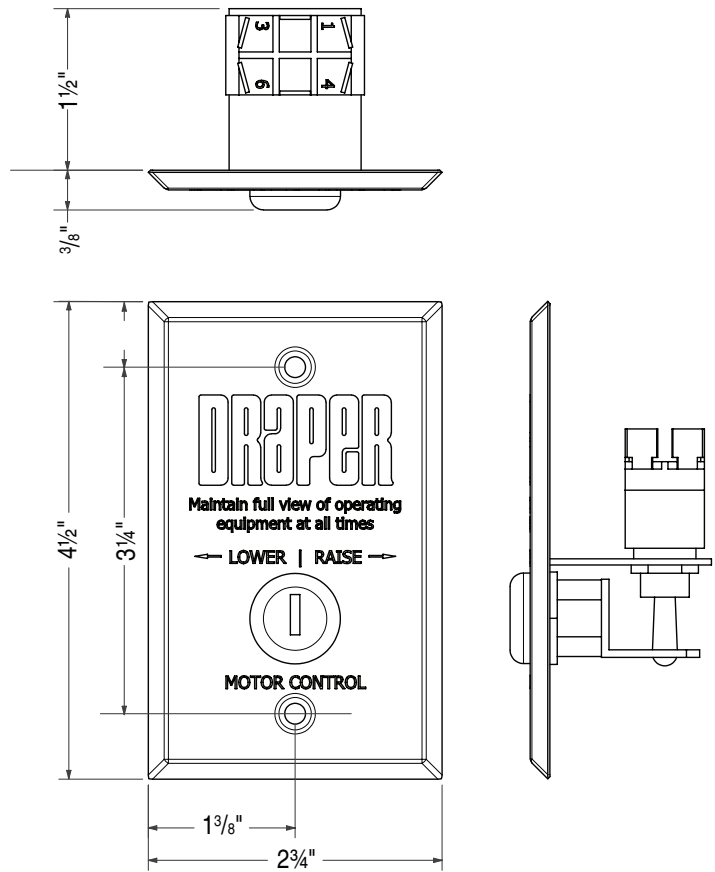
Winch can be mounted in any orientation that allows for correct wrap direction and unobstructed cable travel which provides extreme flexibility during installation.

Winch Assembly is covered by a five-year limited warranty and weighs just 68 Lbs. (30.8 kilograms).

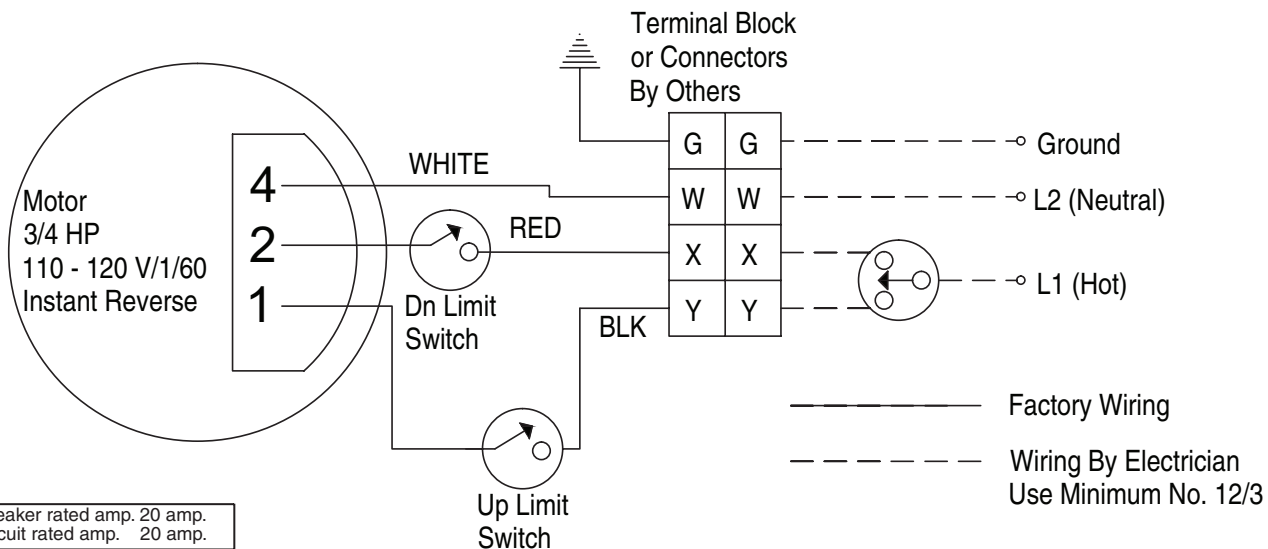
### Please Select Winch

- Backstop Electric Winch with Single Gang Key Switch
- Backstop Electric Winch without key switch for use with controls systems, wireless remotes or ganged key switches

## Key Switch



## Wiring Diagram



Circuit breaker rated amp. 20 amp.
Fused circuit rated amp. 20 amp.
Minimum Wire Size
90' maximum run..... 12 ga.
90' to 140' run..... 10 ga.
Over 140'..... 8 ga.
Sizes of wall masonry boxes required for single and ganged key switches-- All boxes 2" deep and 4" high.