



THE ULTIMATE HOME COURT ADVANTAGE

Wilson® Outdoor Basketball Systems

 **Wilson**®

RIM ROCKER™ THE ULTIMATE SYSTEM

- 72" x 42" high performance clear acrylic 3/8" thick backboard bonded to frame with 3M® foam tape.
- 2-3/8" heavy duty welded steel "H" Style backboard frame.
- 2" continually extruded aluminum backboard trim.
- 1" thick black Pro Style backboard pad standard.
- One-piece 6" heavy duty square steel 3/16" thick pole with 8 welded gussets.
- Easy to assemble in-ground mounting system.
- 4" heavy duty welded steel tubular arm supports with 4' board to pole clearance.
- "Power Glide™" steel cylinder system adjusts rim from 7'-6" to 10'.
- Premium "Pro Flex™" 5/8" thick steel rim.
- "Pro Flex" Rim is mounted directly to steel backboard frame.
- All pivot points utilize welded steel encasements.
- All steel has two coats of enamel powder coating.
- System has a limited lifetime warranty.

Rim Rocker Basketball System

| Stock# | System Components |
|--------|-------------------------|
| BS0110 | Rim Rocker Backboard |
| BS0105 | Rim Rocker Pole |
| BS0115 | Rim Rocker Arm Supports |
| BS0120 | Pro Flex Rim |



STREET SLAM™ THE PERFORMANCE SYSTEM

- 60" x 38" high performance clear acrylic 3/8" thick backboard bonded to frame with 3M® foam tape.
- 2-3/8" heavy duty welded steel "H" Style backboard frame.
- 2" continually extruded aluminum backboard trim.
- One-piece 5" square steel 3/16" thick pole with 8 welded gussets.
- Easy to assemble in-ground mounting system.
- 2-3/8" heavy duty welded steel tubular arm supports with 3' board to pole clearance.
- "Power Glide™" steel cylinder system adjusts rim from 7'-6" to 10'.
- Premium "Pro Flex™" 5/8" thick steel rim.
- "Pro Flex" Rim is mounted directly to steel backboard frame.
- All pivot points utilize welded steel encasements.
- All steel has two coats of enamel powder coating.
- System has a limited lifetime warranty.

Street Slam Basketball System

| Stock# | System Components |
|--------|--------------------------|
| BS0210 | Street Slam Backboard |
| BS0205 | Street Slam Pole |
| BS0215 | Street Slam Arm Supports |
| BS0120 | Pro Flex Rim |



JAM-IN™ THE COMPETITIVE SYSTEM

- 48" x 32" performance clear acrylic 5/16" thick backboard bonded to frame with 3M foam tape.
- 1-1/16" welded steel "H" Style backboard frame.
- 2" continually extruded aluminum backboard trim.
- One-piece 4" square steel 1/8" thick pole with 4 welded gussets.
- Easy to assemble in-ground mounting system.
- 2" welded steel tubular arm supports with 2'-6" board to pole clearance.
- "Power Glide™" steel cylinder system adjusts rim from 7'-6" to 10'.
- Premium "Pro Flex™" 5/8" thick steel rim.
- "Pro Flex" Rim is mounted directly to steel backboard frame.
- All pivot points utilize welded steel encasements.
- All steel has two coats of enamel powder coating.
- System has a limited lifetime warranty.

Jam-In Basketball System

| Stock# | System Components |
|--------|---------------------|
| BS0310 | Jam-In Backboard |
| BS0305 | Jam-In Pole |
| BS0315 | Jam-In Arm Supports |
| BS0120 | Pro Flex Rim |



SUPERIOR PERFORMANCE THROUGH TECHNOLOGICAL INNOVATION

Wilson®, the leader in basketball technology, has brought the same design & engineering expertise to our new line of performance outdoor basketball systems. Wilson basketball systems set a new standard for the industry.



In-Ground Mounting System

Designed to ensure a level system and perfect bolt alignment. The mounting system allows you to move the basketball system if you relocate.



Multi-Gusseted Base With One Piece Steel Pole Construction

Professionally welded pole support gussets maximize stability and rigidity to reduce rim and backboard motion. Powder coated finish protects in all weather.



Arm Support System

Heavy-duty tubular welded steel design reduces torque and provides incredible structural stability. All pivot points utilize stainless steel encasements which enhance adjustments.



Acrylic Backboard

High performance fortified clear acrylic backboard with 3M® foam mounting tape to provide consistent rebound. Welded, tubular steel "H" Frame designed for maximum stability.



One-Piece Extruded Aluminum Board Frame

Designed with a continuous extruded aluminum trim eliminating ragged corner edges and enhancing durability.

Extra Heavy-Duty Breakaway Rim

Premium "Pro Flex™" rim made of 5/8" welded steel for incredible durability.



Height Adjustment System

The "Power Glide™" Steel Cylinder System utilizes the latest in rotational technology making height adjustment effortless. The basketball systems easily adjust from 7'-6" to 10'.



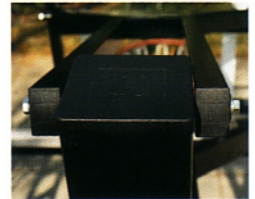
Detachable Adjustment Handle

Removeable handle provides parental control of height for possible safety concerns.



High-Durability Plastic Tube End Caps

All tubular openings have embossed endcaps to lock out moisture to enhance durability.



Stainless Steel Hardware

All hardware is stainless steel to extend performance over the lifetime of the product.



SYSTEM ACCESSORIES

Accessories can be special ordered through Wilson Authorized Dealers.

Contact 1-866-892-7277 for information.



Extra Heavy-Duty Breakaway Rim

Premium "Pro Flex" rim made with 5/8" welded steel for incredible durability.

BS0120 Pro Flex Rim



Molded Backboard Pad

Soft and durable 1" thick composite backboard pad reduces impact.

BS0126 Street Slam Pad

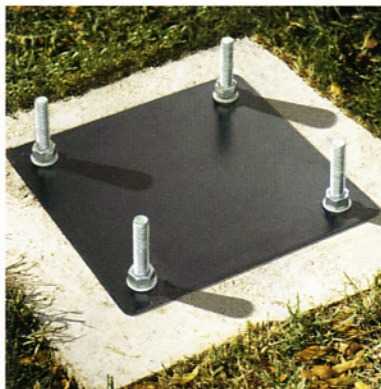
BS0127 Jam-In Pad



Pole Pad

All weather cover with 2" thick composite padding provides exceptional safety and durability. Pole pad fits all 3 Wilson systems.

BS0125 Pole Pad



In-Ground Mounting System

Replacement mounting anchor allows the basketball system to be relocated.

BS0128 Replacement Anchor System



Contact Manufacturers Representative:
Basketball-Goals.com
28 Carter Heights
Plantsville, CT 06479
Tel. 866-892-7277
Fax 775-822-1858
Email: basketballgoals@aol.com
Website: www.Basketball-Goals.com

Wilson and W are registered trademarks and Jam-In, Power Glide, Pro Flex, Rim Rocker, and Street Slam are trademarks of Wilson Sporting Goods Co.

3M is a registered trademark of the 3M Company.

wilson.com